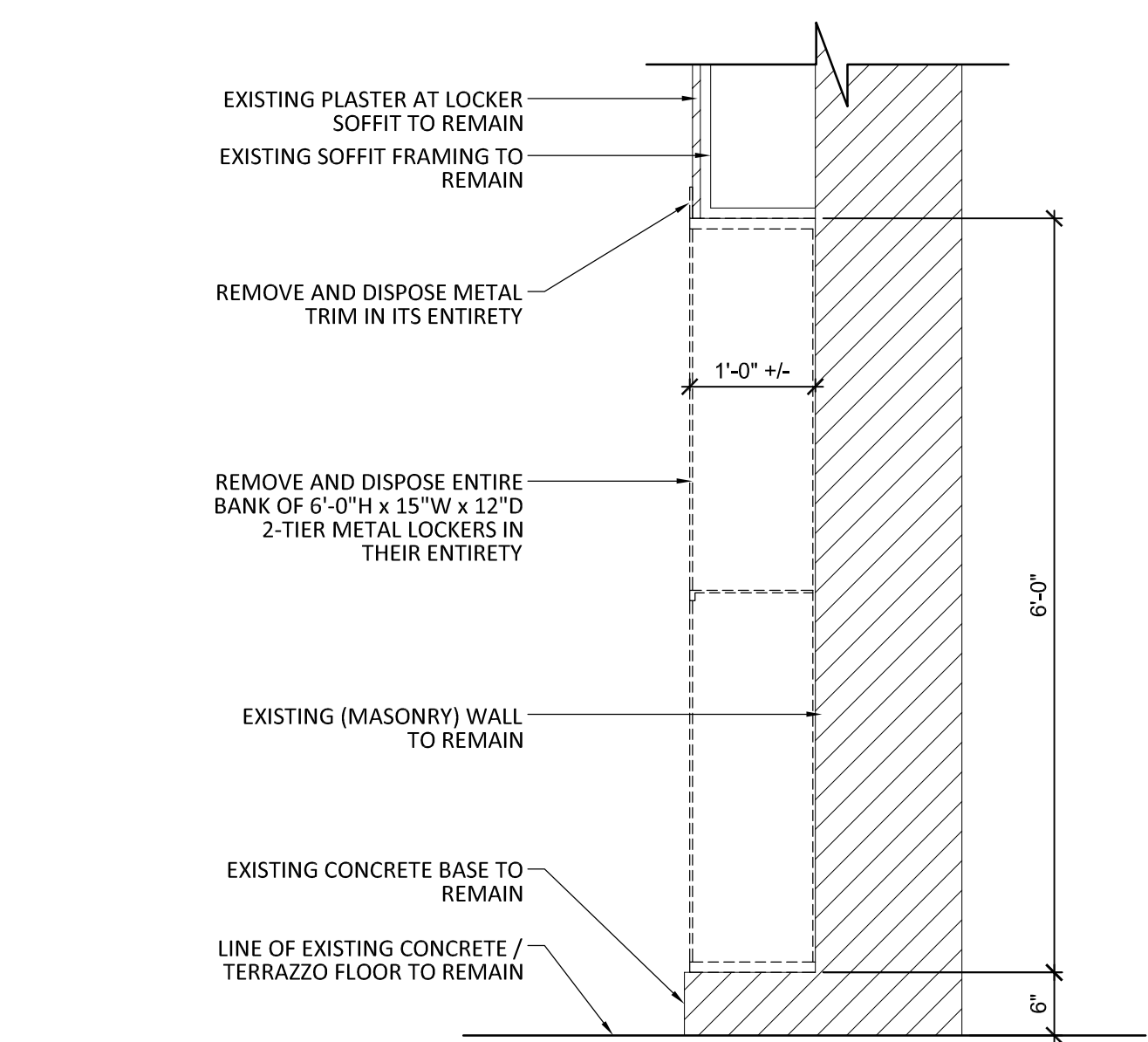
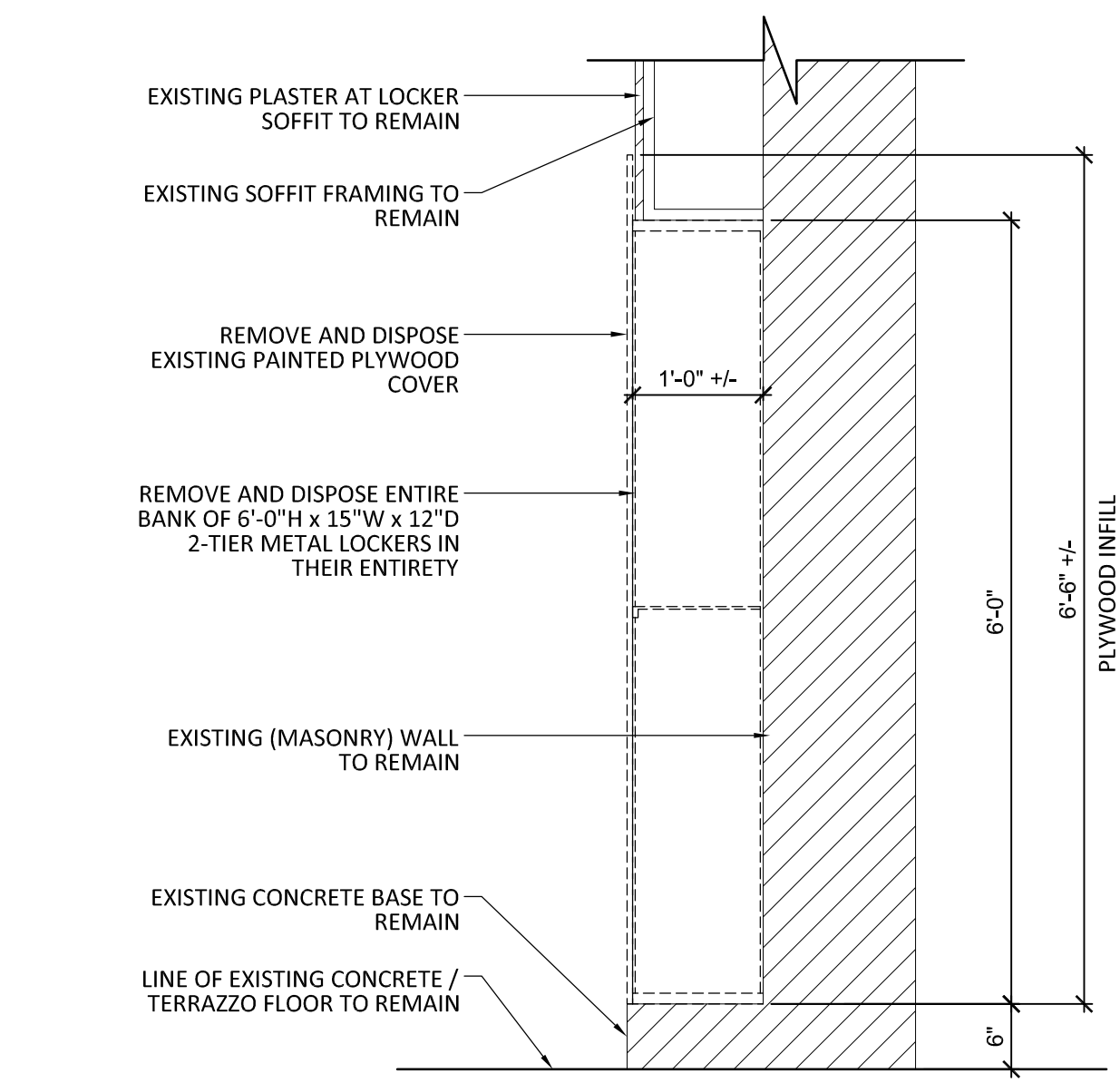


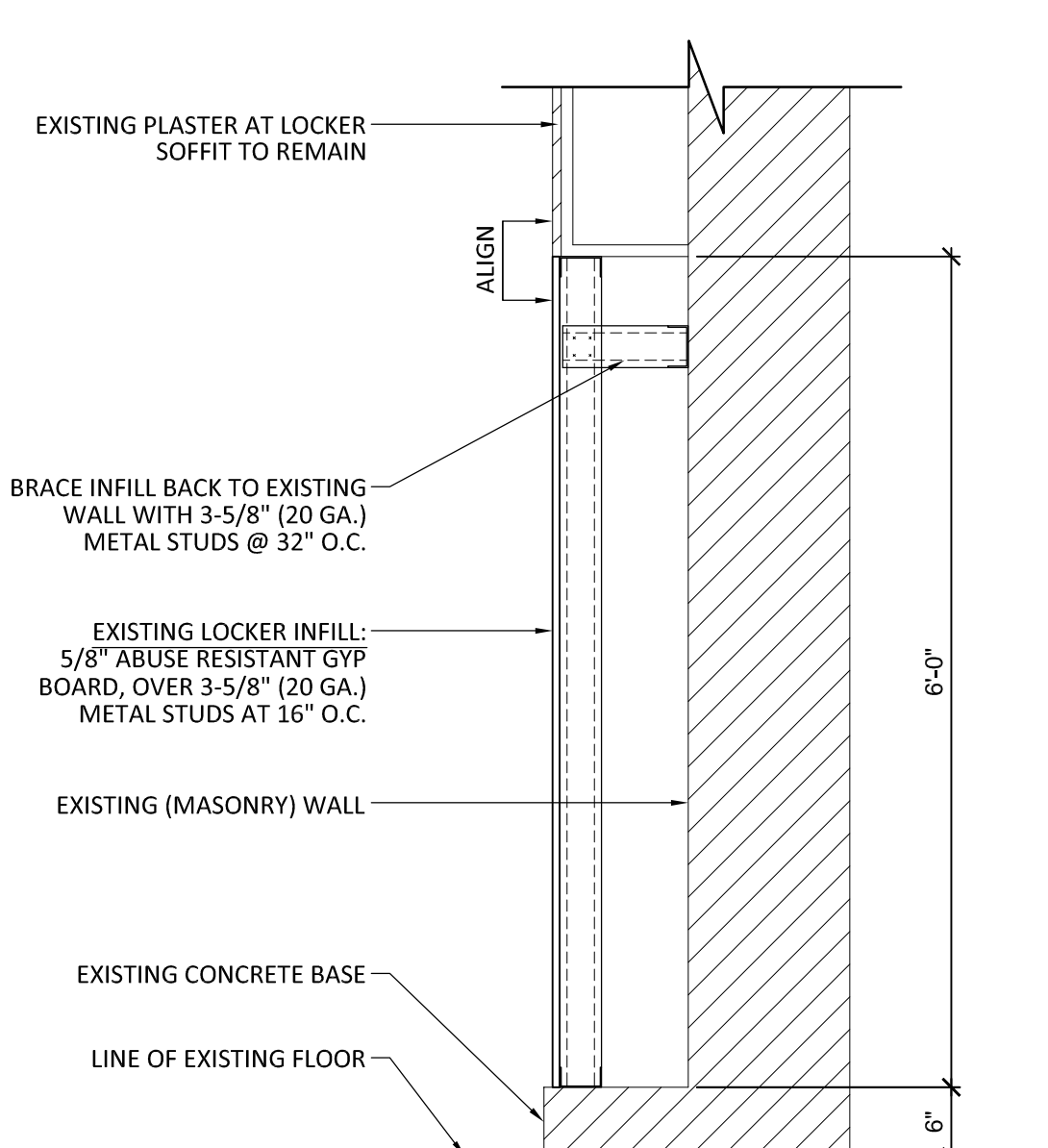
12/23/2025 11:16:22 AM
P:\2025\25-024 ROWAN GLS ROUND 5\DRAWINGS\CONSTRUCTION\DETAILS
CONFIDENTIAL AND PROPRIETARY / © DIGROUPARCHITECTURE 2021. UNAUTHORIZED REPRODUCTION OR OTHER USE OF THESE DRAWINGS OR IDEAS IS PROHIBITED.



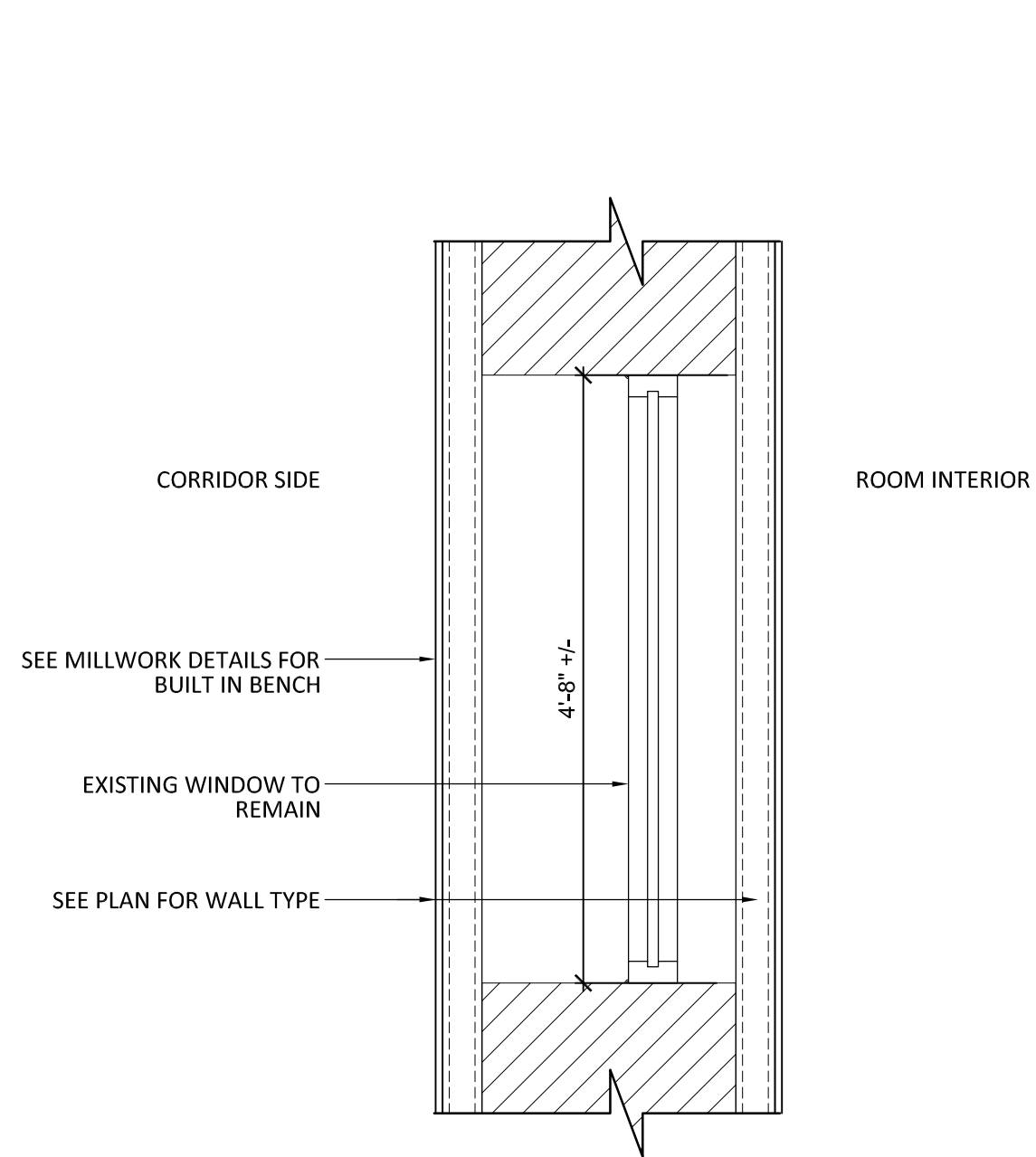
1 Existing Locker Demo Detail
SCALE: 3/4" = 1'-0"



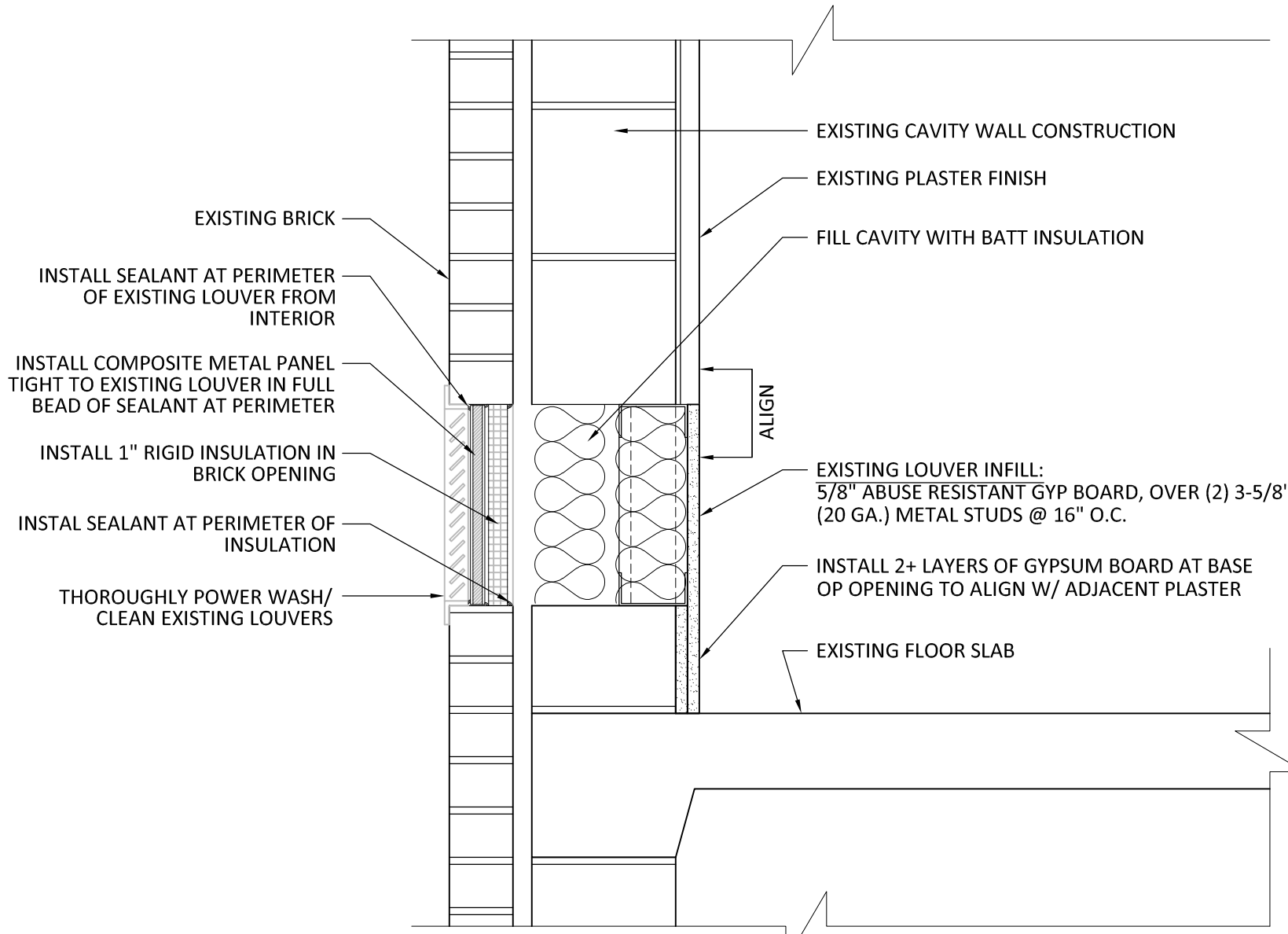
2 Existing Locker Demo Detail
SCALE: 3/4" = 1'-0"



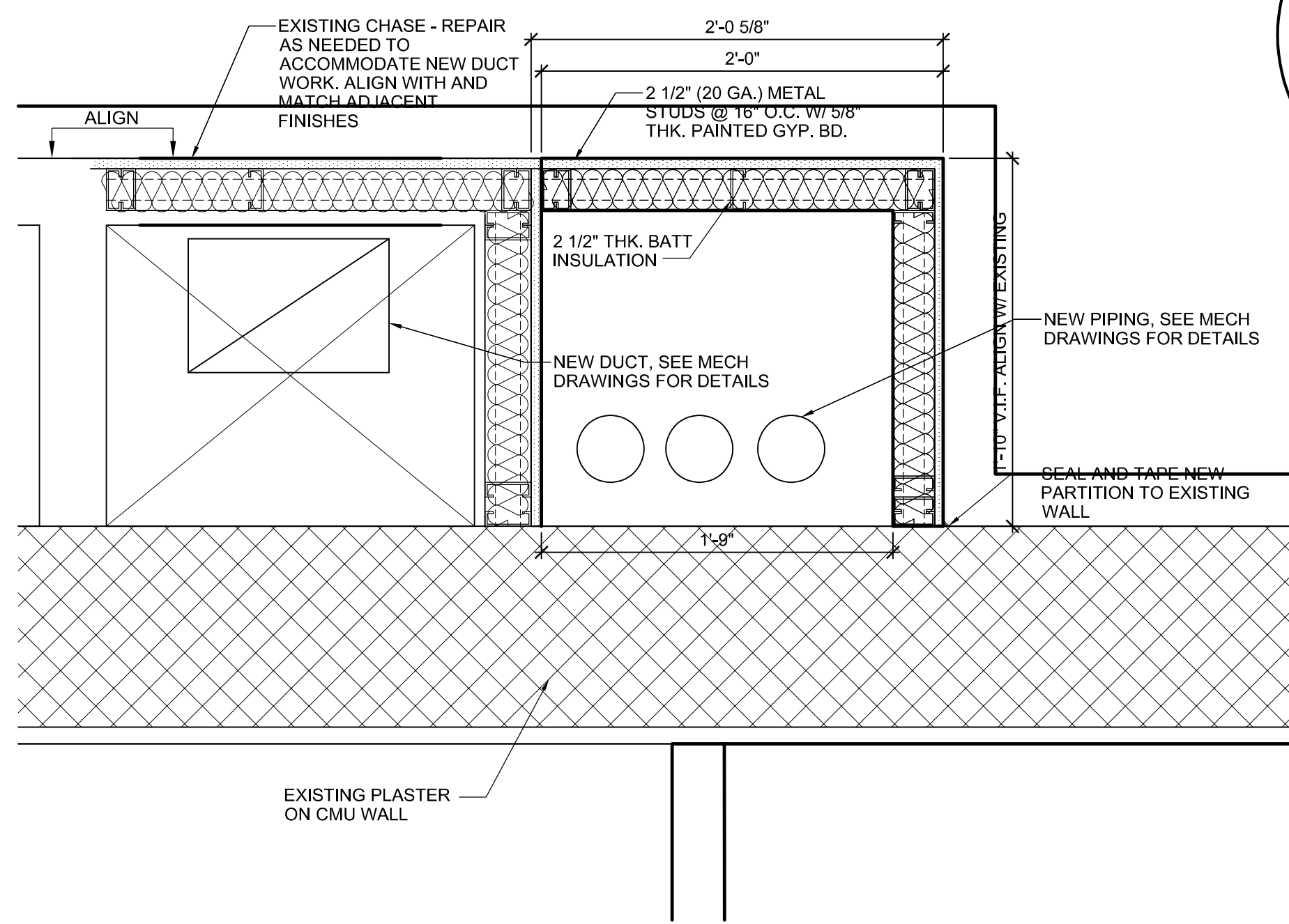
3 New Locker Infill Detail
SCALE: 3/4" = 1'-0"



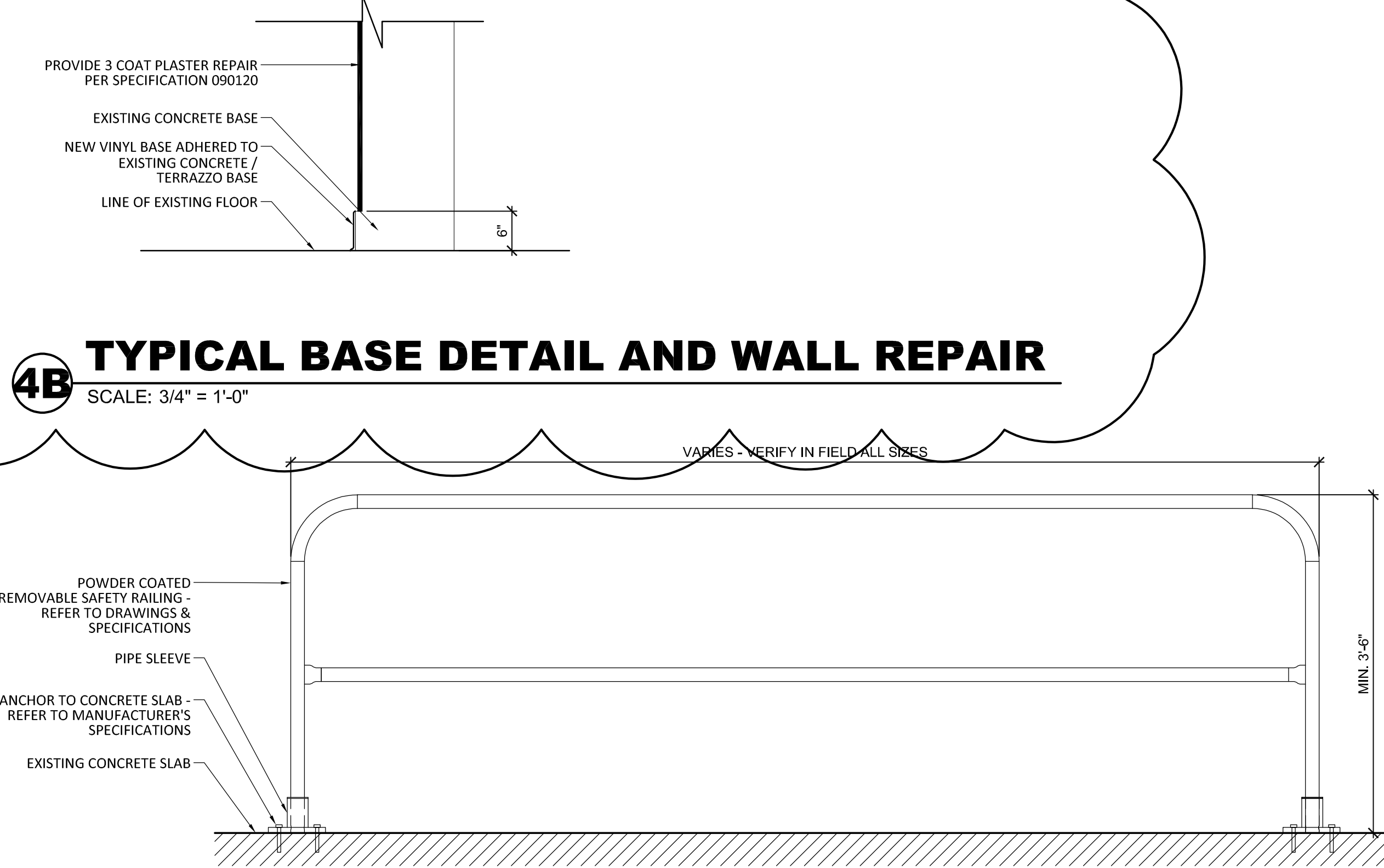
4 WINDOW INFILL DETAIL
SCALE: 3/4" = 1'-0"



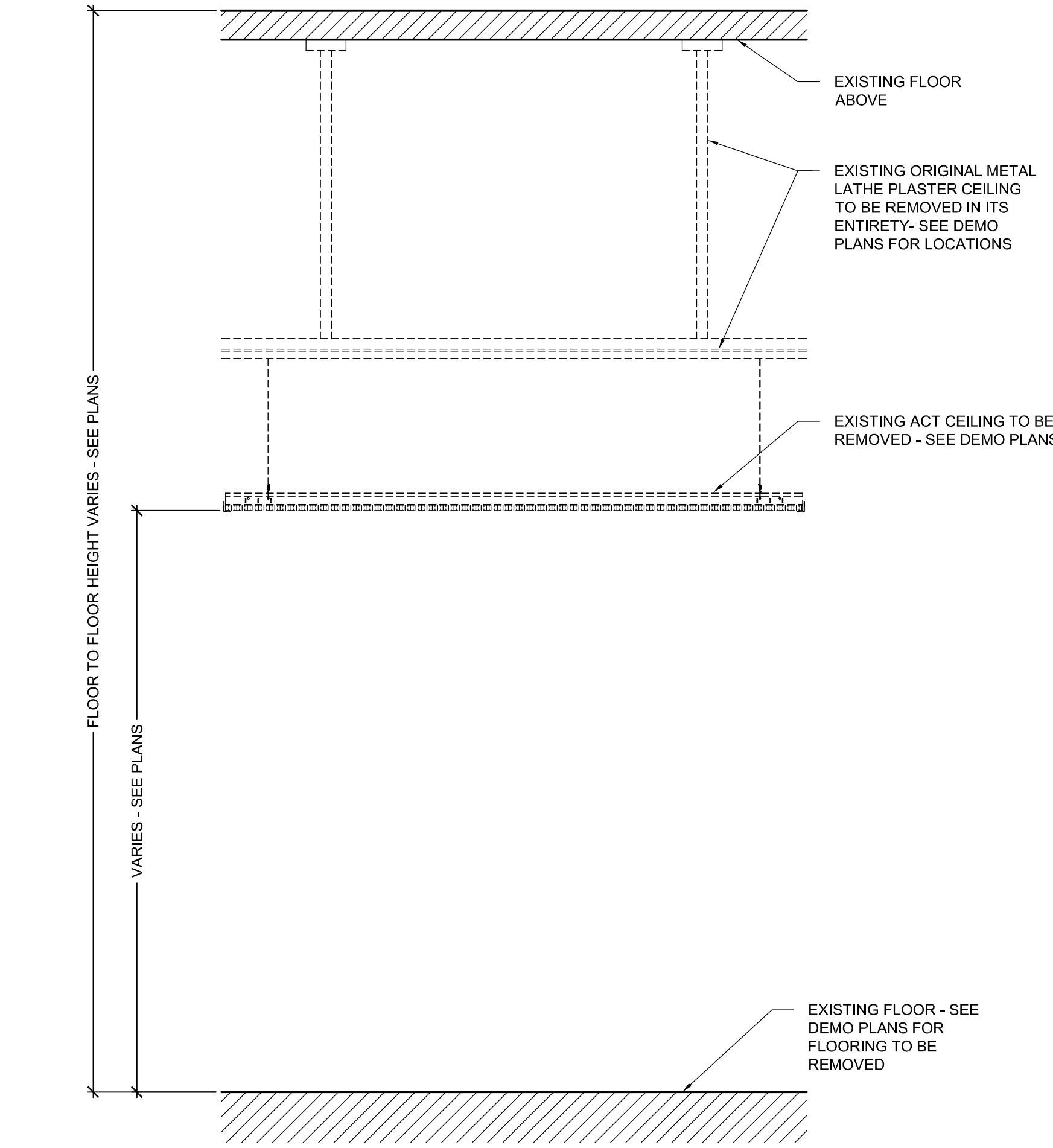
5 Louver Infill Detail
SCALE: 1 1/2" = 1'-0"



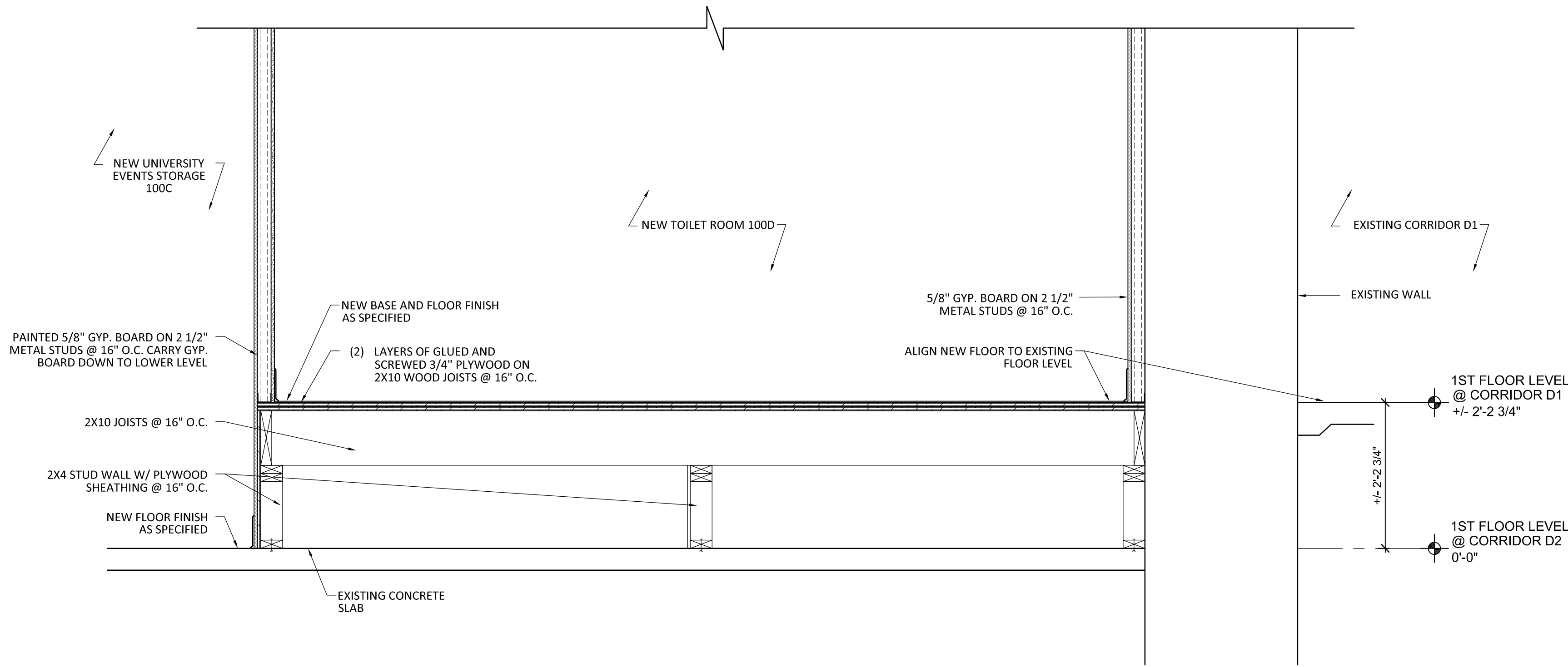
7 Typical Plan Detail
SCALE: 1 1/2" = 1'-0"



8 Railing Elevation Detail
SCALE: 3/4" = 1'-0"

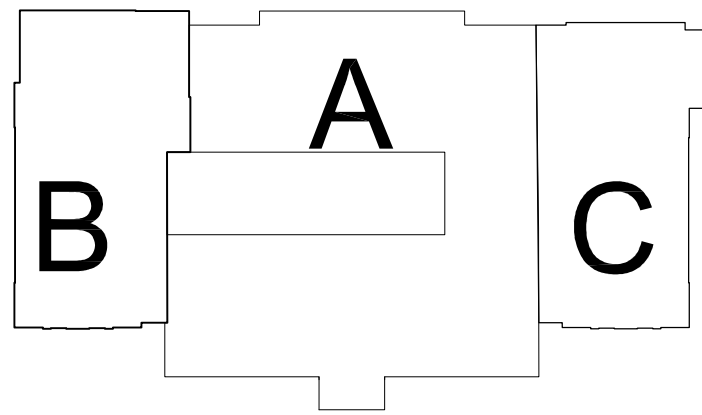


6 Original Plaster Ceiling Demo Detail
SCALE: 3/4" = 1'-0"



9 Raised Floor Detail @ New Toilet Rms
SCALE: 3/4" = 1'-0"

KEY PLAN:



No.	Date	Description
#1	12/23/25	ADDENDUM #1
	12/09/25	OUT TO BID
	12/03/25	DCA Submission
Revisions / Issues		

DIGroupArchitecture
ARCHITECTURE FOR CHANGE

15 Bethany Street • New Brunswick, NJ 08901 • T:732.249.6242
2450 W Hunting Park Ave., Bldg 9 • Philadelphia, PA 19129-1302 • T:215.634.3400

Richard D. Alderiso, AIA
NJ RA A1 15023, NY RA 027416, PA RA 405474

Client:
Rowan University
201 Mullica Hill Rd.
Glassboro, NJ 08028

Project:
Alterations to Facility Located at 202 Delsea Drive
BLOCK 26 / LOT 412
202 Delsea Dr.
Glassboro, NJ 08028

Drawing Information:
Project No: 25.024
Date: 05/19/2023
Drawn By: TC
Checked By:

Sheet Name:
PLAN & MISC. DETAILS

Sheet No:

A-730
Sheet 0 of 000